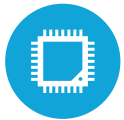




HIGHLIGHTS



Projected Capacitive Touch Screen



4 CPU Options Available (up to Intel i7)



Up to 16GB RAM



Rackable Motherboard



Multiple Peripheral Options

SPECIFICATIONS

PROCESSING

Intel Celeron G3930TE Dualcore 2.7Ghz
Intel Core i3-7101TE Dualcore 3.4Ghz
Intel Core i5-7500T Quadcore 2.7Ghz, up to 3.3Ghz
Intel Core i7-7700T Quadcore 2.9Ghz, up to 3.8Gh
Memory: 2X DDR4-LV up to 16GB Graphics : Intel HD Graphics

LCD PANEL

LCD Size: 15"
LCD Type: LED LCD
Brightness: 350 nits
Maximum Resolution: 1024 x 768
Touch Screen Type: Projected Capacitive
Tilt Angle: 0° ~ 140°
Screen: Bezel-less True Flat

STORAGE

2x2.5" SATA with Raid 0, 1

POWER SUPPLY

120W +19V or 180W with powered USB Port

DIMENSIONS

15" with base; 14.8" H x 8.3" W x 9" D (with MSR)
Peripheral Variation (width only): 15 5/8" (with fingerprint)
16" (with MSR and fingerprint)
Weight on Standard base: 14.5 LBS

EXPANSION

M.2 Slot: 1 Optional

I/O PORTS (STANDARD)

USB: 2 x(USB 2.0) 4 x(USB 3.0)
Serial: 3xRJ45 with DB9 Adapters (COM3, 4 powered with 5V/12V, via BIOS)
LAN: Gigabit LAN (10/100/1000)
VGA: D-SUB 15 with power options via BIOS
Display Port: 1
Audio Out: 1

I/O PORTS (OPTIONAL)

1: 2xUSB 2.0, RJ45 Gigabit LAN
2: 1x Power USB +24V, 1x Power USB +12V, 1x CD
3: 1x +24V Printer power port, 1x Power USB +12V, 1x CD

OS SUPPORT

Windows 10 IOT & Pro (64 bit)



KEY FEATURES

1	15" Projected Capacitive Touch Screen
2	Rackable motherboard from the top of unit
3	Optional MSR
4	Optional Steelcoat Fingerprint Reader